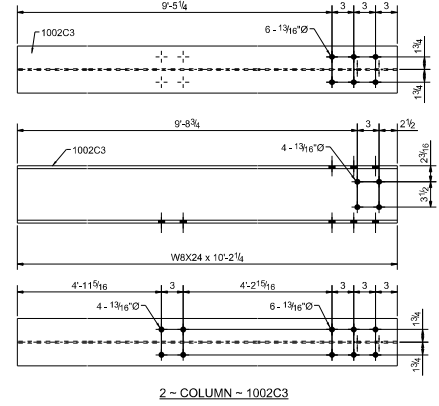
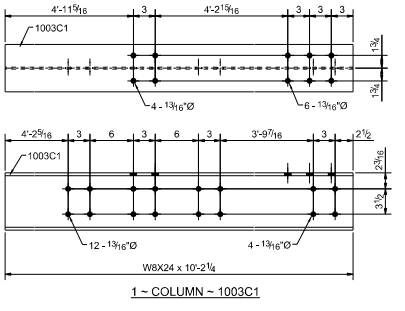
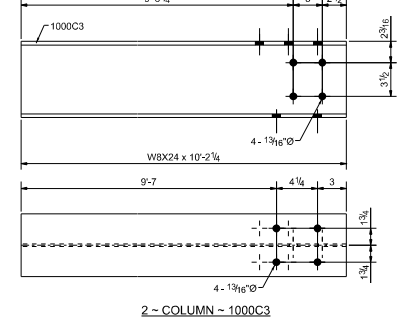
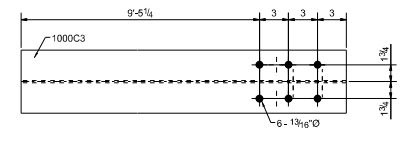
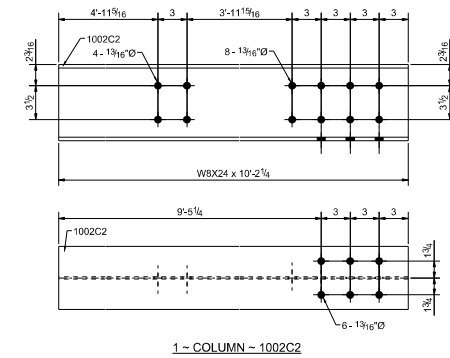
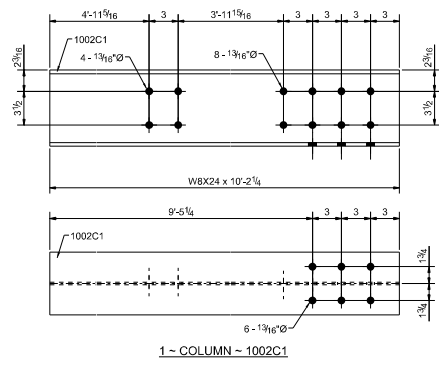
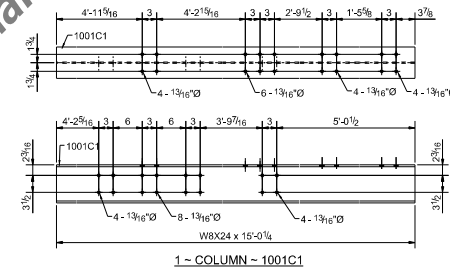
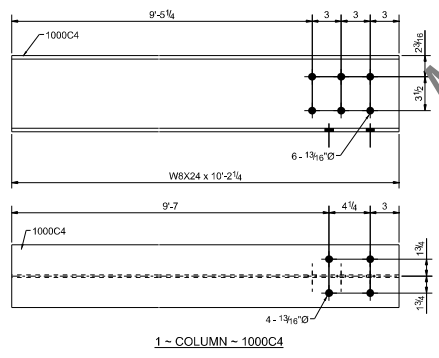
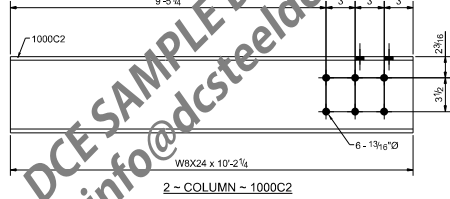
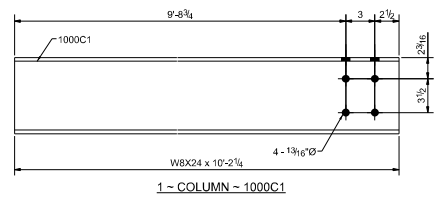
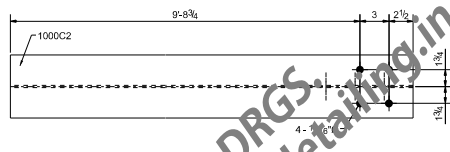
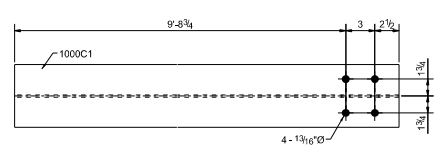


DCE SAMPLE DRGS
Mail ID: info@dcsteeldetailing.in

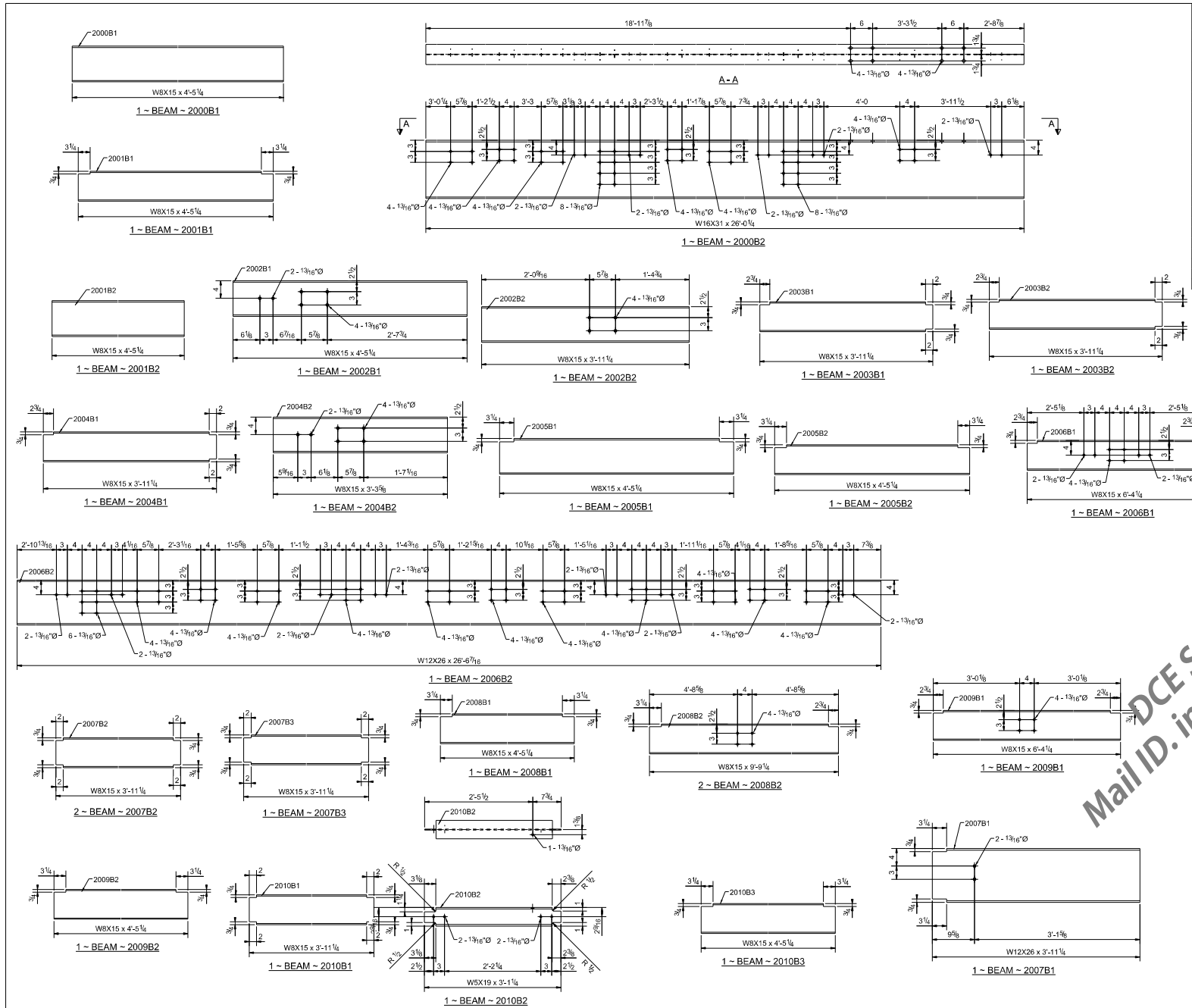


MARK	QTY	DESCRIPTION	LENGTH	STEEL GRADE	REMARKS	WEIGHT
1000C1	1	W8X24	10'-2 1/4"	A992	GALVANIZED	244.72
1000C2	2	W8X24	10'-2 1/4"	A992	GALVANIZED	489.44
1000C3	2	W8X24	10'-2 1/4"	A992	GALVANIZED	489.44
1000C4	1	W8X24	10'-2 1/4"	A992	GALVANIZED	244.72
1001C1	1	W8X24	10'-0 1/4"	A992	GALVANIZED	360.82
1002C1	1	W8X24	10'-2 1/4"	A992	GALVANIZED	244.72
1002C2	1	W8X24	10'-2 1/4"	A992	GALVANIZED	244.72
1002C3	2	W8X24	10'-2 1/4"	A992	GALVANIZED	489.44
1003C1	1	W8X24	10'-2 1/4"	A992	GALVANIZED	244.72
TOTAL WEIGHT						3052.74

STEEL
OPEN HOLES
SHOP PAINT

0	ISSUED FOR FABRICATION
A	RELEASED FOR APPROVAL
JOB:	
LOCATION:	
ARCH OR ENGR:	
CUSTOMER:	
DRAWN BY:	DATE:
CHECKED:	DATE:
ELECTRODES	JOB
	SHEET

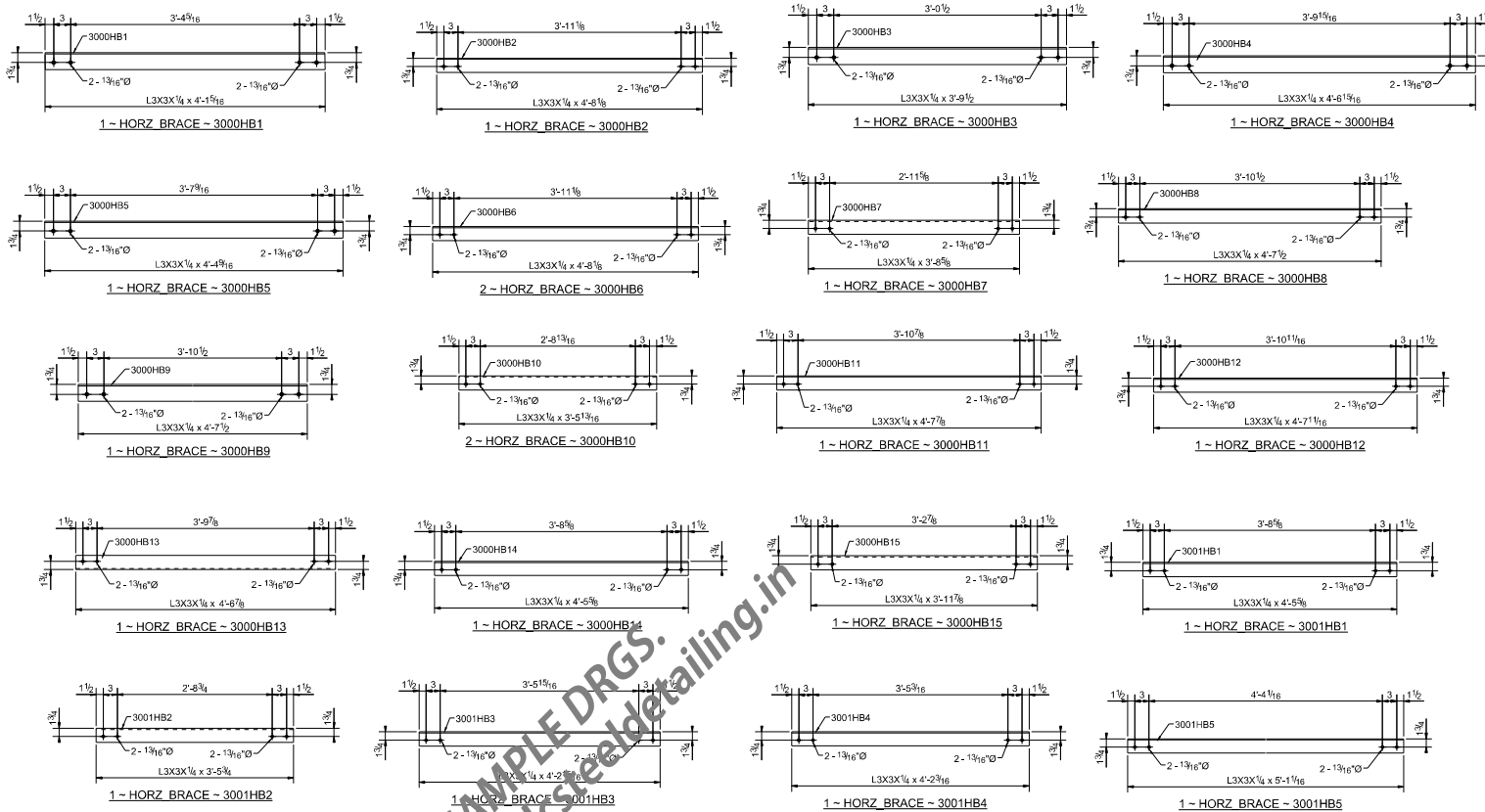
G1000



MARK	QTY	DESCRIPTION	LENGTH	STEEL GRADE	REMARKS	WEIGHT
2000B1	1	W8X15	4'-5 1/4"	A992	GALVANIZED	66.62
2000B2	1	W16X31	26'-0 1/4"	A992	GALVANIZED	807.37
2001B1	1	W8X15	4'-5 1/4"	A992	GALVANIZED	66.62
2001B2	1	W8X15	4'-5 1/4"	A992	GALVANIZED	66.62
2002B1	1	W8X15	4'-5 1/4"	A992	GALVANIZED	66.62
2002B2	1	W8X15	3'-11 1/4"	A992	GALVANIZED	59.12
2003B1	1	W8X15	3'-11 1/4"	A992	GALVANIZED	59.12
2003B2	1	W8X15	3'-11 1/4"	A992	GALVANIZED	59.12
2004B1	1	W8X15	3'-11 1/4"	A992	GALVANIZED	59.12
2004B2	1	W8X15	3'-3 5/8"	A992	GALVANIZED	49.58
2005B1	1	W8X15	4'-5 1/4"	A992	GALVANIZED	66.62
2005B2	1	W8X15	4'-5 1/4"	A992	GALVANIZED	66.62
2006B1	1	W8X15	6'-4 1/4"	A992	GALVANIZED	95.40
2006B2	1	W12X26	26'-6 7/16"	A992	GALVANIZED	890.57
2007B1	1	W12X26	3'-11 1/4"	A992	GALVANIZED	102.47
2007B2	2	W8X15	3'-11 1/4"	A992	GALVANIZED	118.23
2007B3	1	W8X15	3'-11 1/4"	A992	GALVANIZED	59.12
2008B1	1	W8X15	4'-5 1/4"	A992	GALVANIZED	66.62
2008B2	2	W8X15	9'-9 1/4"	A992	GALVANIZED	293.39
2009B1	1	W8X15	6'-4 1/4"	A992	GALVANIZED	95.40
2009B2	1	W8X15	4'-5 1/4"	A992	GALVANIZED	66.62
2010B1	1	W8X15	3'-11 1/4"	A992	GALVANIZED	59.12
2010B2	1	WSX19	3'-1 1/4"	A992	GALVANIZED	59.03
2010B3	1	W8X15	4'-5 1/4"	A992	GALVANIZED	66.62
TOTAL WEIGHT						3265.73

DCE SAMPLE DRGS.
 Mail ID: info@dcsteeldetailing.in

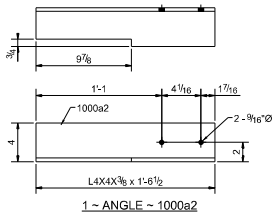
STEEL OPENHOLES SHOP PAINT	
0	ISSUED FOR FABRICATION
A	RELEASED FOR APPROVAL
JOB:	
LOCATION:	
ARCH OR ENGR:	
CUSTOMER:	
DRAWN BY:	DATE:
CHECKED:	DATE:
ELECTRODES	JOB
SHEET	G1003



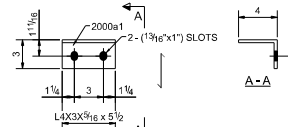
MARK	QTY	DESCRIPTION	LENGTH	STEEL GRADE	REMARKS	WEIGHT
3000HB	1	L3X3X1/4	4'-1 5/16"	A36	GALVANIZED	20.14
3000HB	1	L3X3X1/4	4'-8 1/8"	A36	GALVANIZED	22.94
3000HB	1	L3X3X1/4	3'-9 1/2"	A36	GALVANIZED	18.60
3000HB	1	L3X3X1/4	4'-6 15/16"	A36	GALVANIZED	22.48
3000HB	1	L3X3X1/4	4'-4 9/16"	A36	GALVANIZED	21.47
3000HB	2	L3X3X1/4	4'-8 1/8"	A36	GALVANIZED	45.88
3000HB	1	L3X3X1/4	3'-8 5/8"	A36	GALVANIZED	18.23
3000HB	1	L3X3X1/4	4'-7 1/2"	A36	GALVANIZED	22.70
3000HB	1	L3X3X1/4	4'-7 1/2"	A36	GALVANIZED	22.70
3000HB	2	L3X3X1/4	3'-5 13/16"	A36	GALVANIZED	34.17
3000HB	1	L3X3X1/4	4'-7 7/8"	A36	GALVANIZED	22.84
3000HB	1	L3X3X1/4	4'-7 11/16"	A36	GALVANIZED	22.77
3000HB	1	L3X3X1/4	4'-8 7/8"	A36	GALVANIZED	22.44
3000HB	1	L3X3X1/4	4'-5 5/8"	A36	GALVANIZED	21.92
3000HB	1	L3X3X1/4	3'-11 7/8"	A36	GALVANIZED	19.56
3001HB	1	L3X3X1/4	4'-5 5/8"	A36	GALVANIZED	21.92
3001HB	1	L3X3X1/4	3'-5 3/4"	A36	GALVANIZED	17.06
3001HB	1	L3X3X1/4	4'-2 15/16"	A36	GALVANIZED	20.82
3001HB	1	L3X3X1/4	4'-2 3/16"	A36	GALVANIZED	20.51
3001HB	1	L3X3X1/4	5'-1 1/16"	A36	GALVANIZED	24.96
TOTAL WEIGHT						464.08

DCE SAMPLE DRGS.
 Mail ID: info@dcedetailing.in

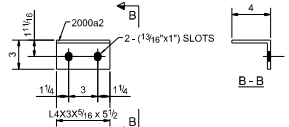
STEEL		OPENHOLES	
SHOP PAINT			
0	ISSUED FOR FABRICATION		
A	RELEASED FOR APPROVAL		
JOB:			
LOCATION:			
ARCH OR ENGR:			
CUSTOMER:			
DRAWN BY:	DATE:	ELECTRODES	JOB
CHECKED:	DATE:	SHEET	G1009



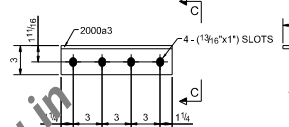
1 ~ ANGLE - 1000a2



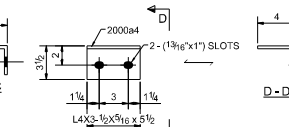
12 ~ ANGLE - 2000a1



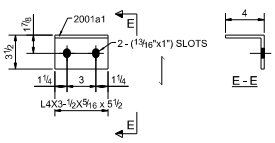
6 ~ ANGLE - 2000a2



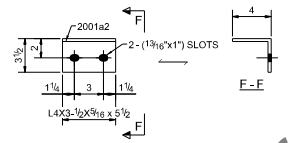
12 ~ ANGLE - 2000a3



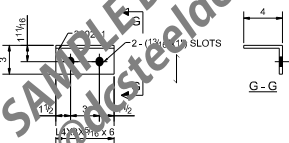
3 ~ ANGLE - 2000a4



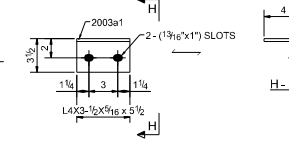
12 ~ ANGLE - 2001a1



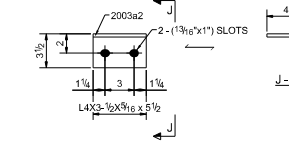
2 ~ ANGLE - 2001a2



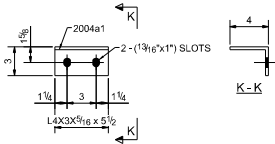
4 ~ ANGLE - 2002a1



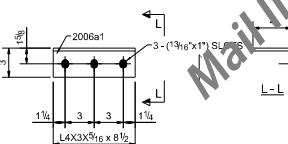
1 ~ ANGLE - 2003a1



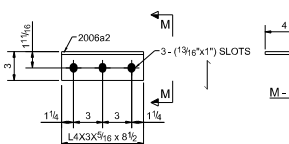
5 ~ ANGLE - 2003a2



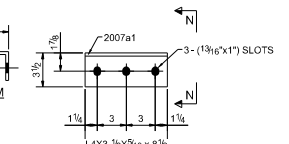
5 ~ ANGLE - 2004a1



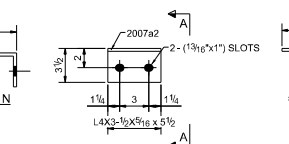
32 ~ ANGLE - 2006a1



24 ~ ANGLE - 2006a2



18 ~ ANGLE - 2007a1



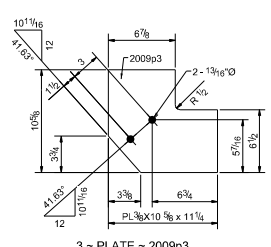
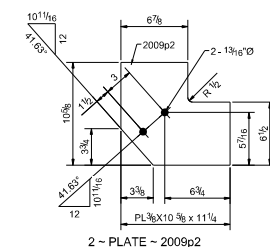
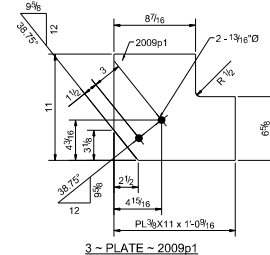
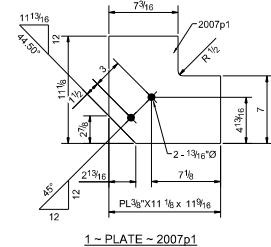
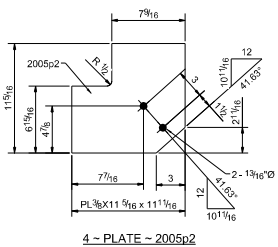
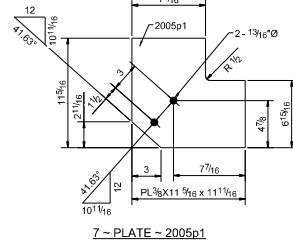
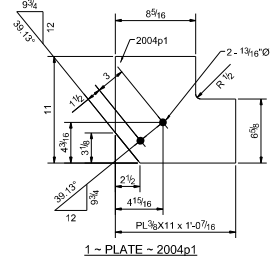
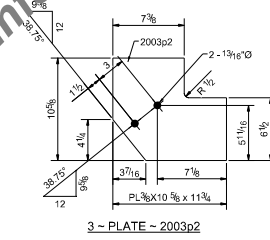
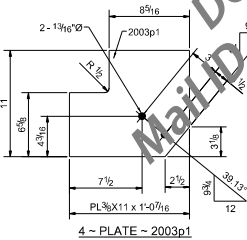
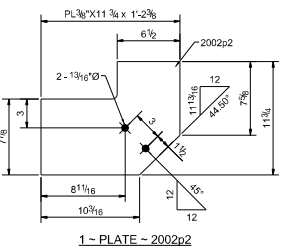
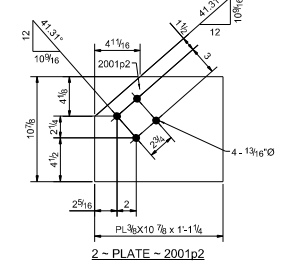
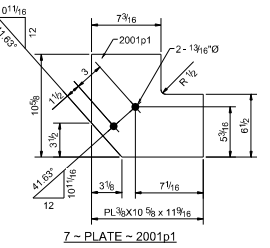
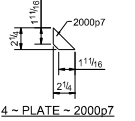
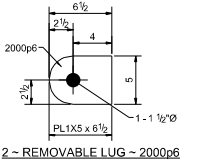
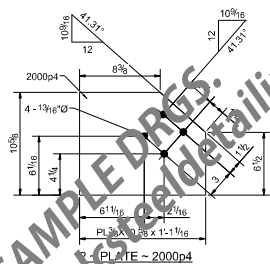
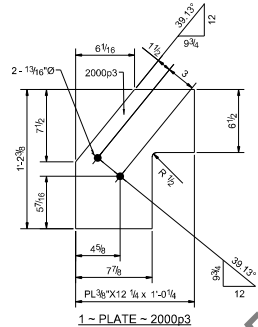
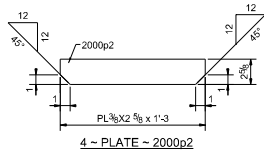
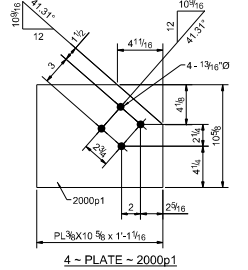
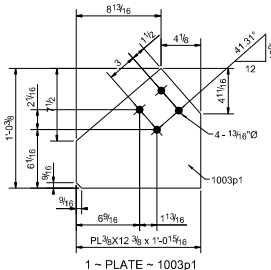
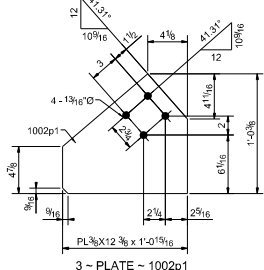
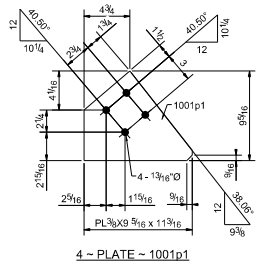
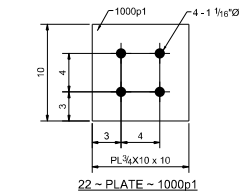
6 ~ ANGLE - 2007a2

MARK	QTY	DESCRIPTION	LENGTH	STEEL GRADE	REMARKS	WEIGHT
1000a2	1	L4X4X3/8	1'-6 1/2"	A992		15.12
2000a1	12	L4X3X5/16	0'-5 1/2"	A36	GALVANIZED	39.64
2000a2	6	L4X3X5/16	0'-5 1/2"	A36	GALVANIZED	19.82
2000a3	12	L4X3X5/16	0'-11 1/2"	A36		82.87
2000a4	3	L4X3-1/2X5/16	0'-5 1/2"	A36		10.60
2001a1	12	L4X3-1/2X5/16	0'-5 1/2"	A36	GALVANIZED	42.39
2001a2	2	L4X3-1/2X5/16	0'-5 1/2"	A36	GALVANIZED	7.05
2002a1	4	L4X3X5/16	0'-6"	A36		14.41
2003a1	1	L4X3-1/2X5/16	0'-5 1/2"	A36		3.53
2003a2	5	L4X3-1/2X5/16	0'-5 1/2"	A36		17.66
2004a1	5	L4X3X5/16	0'-5 1/2"	A36	GALVANIZED	16.51
2006a1	32	L4X3X5/16	0'-8 1/2"	A36		163.35
2006a2	24	L4X3X5/16	0'-8 1/2"	A36		122.51
2007a1	18	L4X3-1/2X5/16	0'-8 1/2"	A36		88.25
2007a2	6	L4X3-1/2X5/16	0'-5 1/2"	A36		21.19
TOTAL WEIGHT						674.94

DCE SAMPLE DRGS.
Mail ID: info@dcedetailing.in

STEEL
OPEN HOLES
SHOP PAINT

0	ISSUED FOR FABRICATION
A	RELEASED FOR APPROVAL
JOB:	
LOCATION:	
ARCH OR ENGR:	
CUSTOMER:	
DRAWN BY:	DATE:
CHECKED:	DATE:
ELECTRODES	JOB
SHEET	G1014



MARK	QTY	DESCRIPTION	LENGTH	STEEL GRADE	REMARKS	WEIGHT
1000p1	22	PL3/4"x10"	0'-10"	A36		467.94
1001p1	4	PL3/8"x9 5/16"	0'-11 3/16"	A36		28.82
1002p1	3	PL3/8"x12 3/8"	1'-0 15/16"	A36		37.39
1003p1	1	PL3/8"x12 3/8"	1'-0 15/16"	A36		12.46
2000p1	4	PL3/8"x10 5/8"	1'-1 1/16"	A36	GALVANIZED	54.81
2000p2	4	PL3/8"x2 3/8"	1'-3"	A36		16.32
2000p3	1	PL3/8"x12 1/4"	1'-2 3/8"	A36		12.68
2000p4	2	PL3/8"x10 5/8"	1'-1 1/16"	A36		27.41
2000p5	2	PL1"x5 1/2"	0'-8"	A36		28.08
2000p6	2	PL1"x5"	0'-6 1/2"	A36	GALVANIZED	16.77
2000p7	4	PL1/2"x2 1/4"	0'-2 1/4"	A36		1.35
2001p1	7	PL3/8"x10 5/8"	0'-11 3/16"	A36		73.96
2001p2	2	PL3/8"x2 3/8"	1'-1 1/4"	A36		26.61
2002p2	1	PL3/8"x11 3/4"	1'-2 3/8"	A36		13.76
2003p1	4	PL3/8"x11"	1'-0 7/16"	A36		48.86
2003p2	3	PL3/8"x10 5/8"	0'-11 3/4"	A36		31.80
2004p1	1	PL3/8"x11"	1'-0 7/16"	A36		12.22
2005p1	7	PL3/8"x11 5/16"	0'-11 11/16"	A36		82.30
2005p2	4	PL3/8"x11 5/16"	0'-11 11/16"	A36		47.03
2007p1	1	PL3/8"x11 1/8"	0'-11 5/8"	A36		11.30
2009p1	3	PL3/8"x11"	1'-0 9/16"	A36		37.03
2009p2	2	PL3/8"x10 5/8"	0'-11 1/4"	A36	GALVANIZED	20.33
2009p3	3	PL3/8"x10 5/8"	0'-11 1/4"	A36		30.50
TOTAL WEIGHT						1141.78

DCE SAMPLE DRGS.
Mail ID: info@dcedetailing.in

STEEL
OPEN HOLES
SHOP PAINT

0	ISSUED FOR FABRICATION
A	RELEASED FOR APPROVAL
JOB:	
LOCATION:	
ARCH OR ENGR.	
CUSTOMER:	
DRAWN:	DATE:
CHECKED:	DATE:
ELECTRODES	JOB
SHEET	G1017